



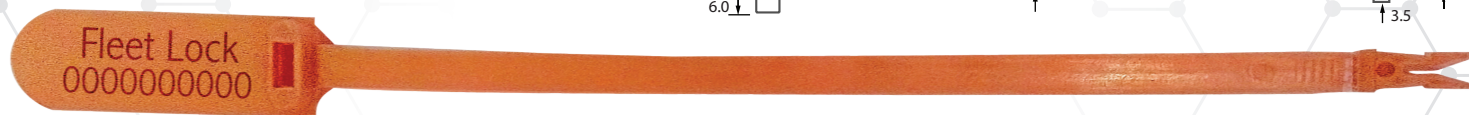
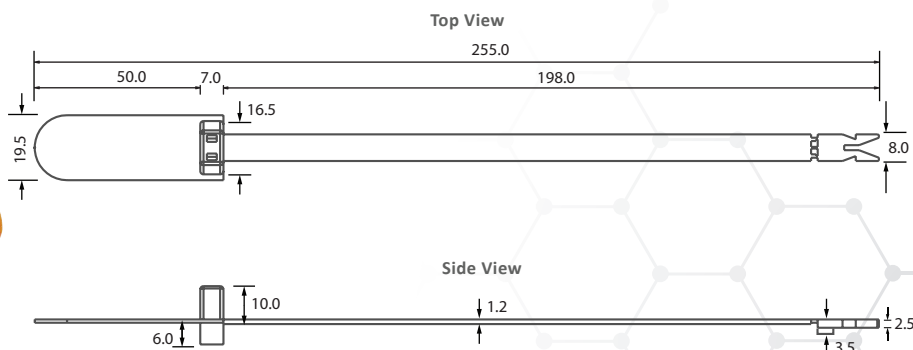
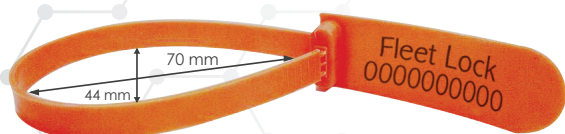
MEGA FORTRIS
G R O U P

Indicative Fixed Length Seal · Data Sheet

Fleet Lock



This product also able to be produced using **BioPlas** material **except for any transparent product.**



Economical Fixed Length Seal

Features

- 1 Fleet Lock seals are etched with permanent laser marking. Laser marking offers a high level of security of tamper evidence.
- 2 Security breaking lines at the snapping point provide easy removal of the seal and prevents a broken seal from being glued or welded together without leaving clear, visible evidence of tampering.
- 3 A large flap area gives the user ample space for customized information and ease of identification.
- 4 A double locking mechanism strengthens security, making the Fleet Lock more difficult to tamper with.
- 5 The stopper deters tampering when the seal has already been secured and applied.
- 6 The seal's sturdy, durable body passes the hot water test – a common method used to breach one-piece moulded seals.
- 7 When the Fleet Lock seal is locked correctly, the toes protrude through the back of the locking chamber. This feature ensures proper sealing and at the same time, prevents tampering via the back of the seal.

Technical Specifications

PRODUCT- FLEET LOCK SEAL

Code	Material	Locking Length	Strap Dimensions	Tensile Strength	Marking Area	Max Marking Digits
FFLK	Body: PP BioPlas	180 mm (7.1 in)	1.2 x 8.0 mm (0.047 x 0.32 in)	>10 kgf (>22 lbf)	Strap : 6 x 100 mm (0.24 x 3.94 in) Flap : 15 x 40 mm (0.59 x 1.57 in)	Serial no : 12 Barcode : 12

PACKAGING

	Quantity	Dimensions (mm)	Gross Weight kg	Volume m ³
Inner Carton	1,000	454 x 234 x 284 (17.9 x 9.21 x 11.2 in)	4.4 (9.6 lbs)	0.030 (1.06 cu.ft.)
Outer Carton	5,000	1211 x 467 x 304 (47.7 x 18.4 x 12.0 in)	(50.8 lbs)	0.172 (6.08 cu.ft.)
Standard Pallet	60,000	1211 x 1000 x 2018 (47.7 x 39.4 x 79.4 in)	(593.6 lbs)	2.444 (86.32 cu.ft.)

Standard Colours



KEY APPLICATIONS

- ✓ Vehicle doors
- ✓ Shipping containers
- ✓ Railroad container
- ✓ Tankers



FMM EXCELLENCE AWARD 2019
QUEST FOR CONTINUOUS IMPROVEMENT
BEST MANUFACTURER IN MALAYSIA IN 2012

UPDATED : 20 SEPTEMBER 2019