

INDICATIVE SEAL DRAGON SEAL (DS)

Pull-Tight Seal

Stronger seal structure for security in heavy duty.

Dragon Seal features a series of strong indicative seals with a wide flap. It is rigid to withstand rough handling and has high pull strength endurance. It is available in two versions: the classic non tear-off version and the tear-off version for easy, tool-free removal. This range of seals is durable and versatile for security and authentication purposes in any application. These seals include the BioSphere bio-additive.

To provide eco-conscious solutions on a wide array of applications, all Mega Fortris' security seal product lines with plastic content will include the BioSphere bio-additive from 13th May 2024.

Applications:

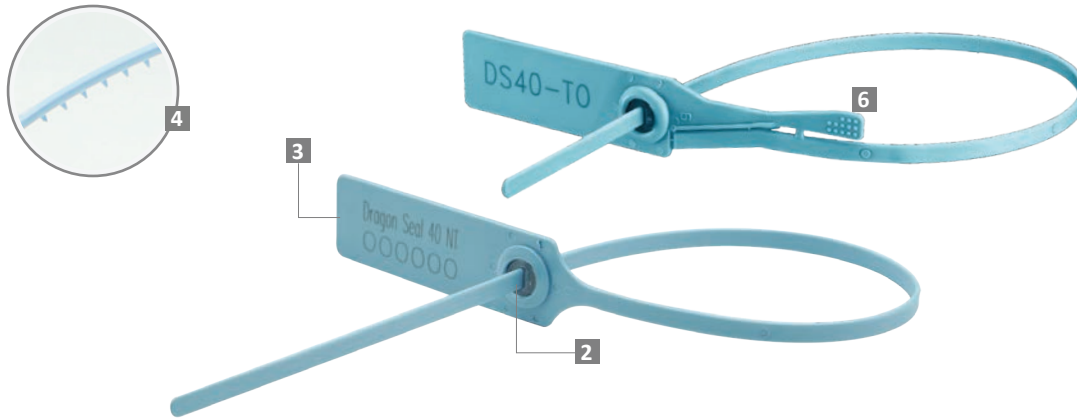
- Retail Applications
- Postal Services
- Logistics
- Banking



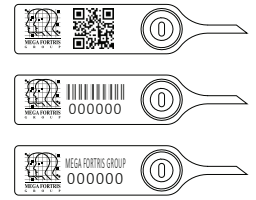
Our biodegradable plastic additives go deeper, allowing microbes to consume the C-C bonds within plastic's structure at a macromolecular level. This increases the surface area of plastic products and enables plastophilic microbes to attach to the polymer's newfound cavities. So, unlike regular plastic that can sit in a landfill for hundreds or thousands of years, plastic enhanced with BioSphere attracts over 600 different types of microbes that effectively digest and consume it.

PREVENTION · PROTECTION · PEACE OF MIND

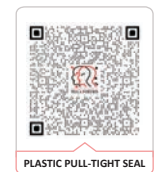




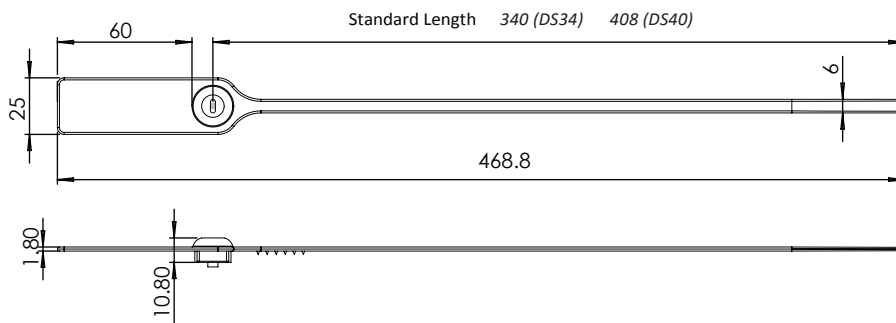
LASER MARKING OPTION



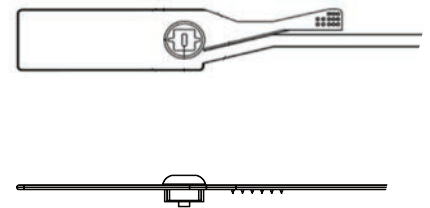
VIEW APPLICATION GIF



- 1 The Dragon Seal is moulded with Polypropylene (PP) material with the metal lock heat staking encapsulated to complement the long, thick strap.
- 2 One-way locking mechanism is embedded for fast and easy application.
- 3 The large flap allows ample space for identifier marking. Irreversible identifiers such as name, logo, barcode, serial number and QR code are laser-marked on the flap.
- 4 Spikes are placed behind the seal to provide better grip on the application surface.
- 5 Different strap lengths are available to cater to different applications.
- 6 Tear-off (TO) variation is available for easy removal.
- 7 These seals include the BioSphere bio-additive.



Tear-Off Variation



TECHNICAL SPECIFICATIONS

PRODUCT - DRAGON SEAL (DS)

| Code | Material | Locking Length (mm) | Locking Size (mm) | Tensile Strength (kgf) | Marking Area (mm) | Max Marking Digits |
|------|---|---------------------|-------------------|------------------------|---------------------------|--------------------------------|
| DS34 | Plastic : Polypropylene (PP) Temperature Range: -5°C to 80°C | 340 (13 in) | 6.0 (0.2 in) | >35 (>77.2 lbf) | 21 x 56 (0.8 x 2.2 in) | Serial no : 14 Barcode : 13 |
| DS40 | Metal Jaw : Stainless Steel (SUS 304) | 400 (16 in) | | | | |

PACKAGING

| Carton | Quantity | Dimensions (mm) | Gross Weight (kg) | Volume (m³) | Standard Pastel Colours |
|------------|----------|---|--------------------|-----------------------|--|
| DS34 Inner | 1000 | 562 x 316 x 244 (22.1 x 12.4 x 9.6 in) | 7.69 (16.95 lb) | 0.043 (1.5 cu.ft.) | Flap : WH PSYL PSOR PSRD PSBL PSGN |
| DS40 Inner | | | 8.79 (19.38 lb) | | BK Cap : WH FR |

For colour customisations, kindly contact us for further information.

Updated Date : 10 April 2025