

INDICATIVE SEAL FORT TWIN LOCK (FTL) Pull-Tight Seal

Comprehensive security feature in a compact structure.

Fort Twin Lock is an indicative plastic seal with comprehensive features for security requirements. It has a double locking mechanism with ribs structured strap to give clear signs of tamper evidence. It is designed with spikes at the back for better gripping. With a full body made of plastic material, full decomposition is achievable.

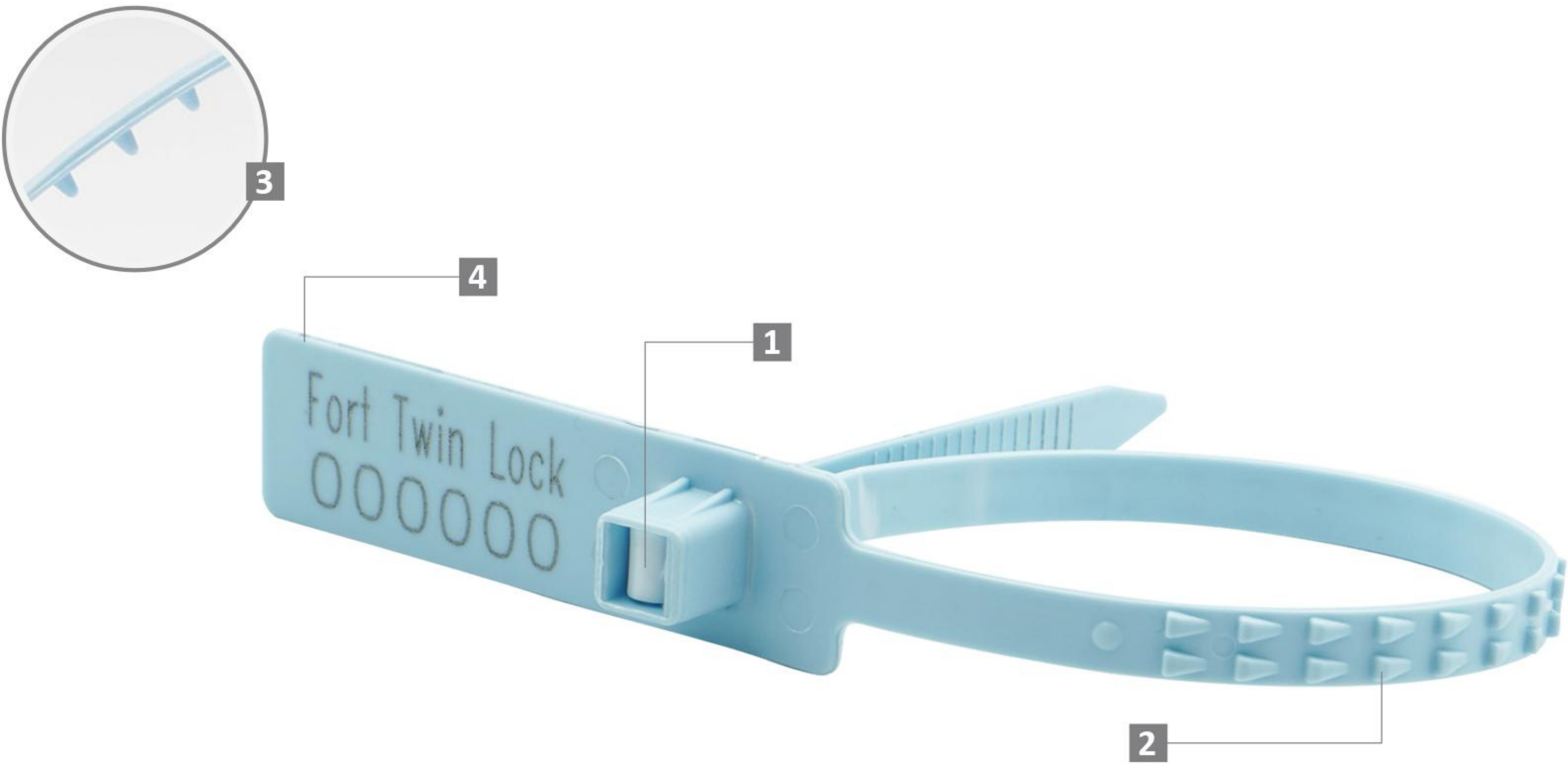
Applications:

- Retail Applications
- Postal Services
- Logistics
- Banking

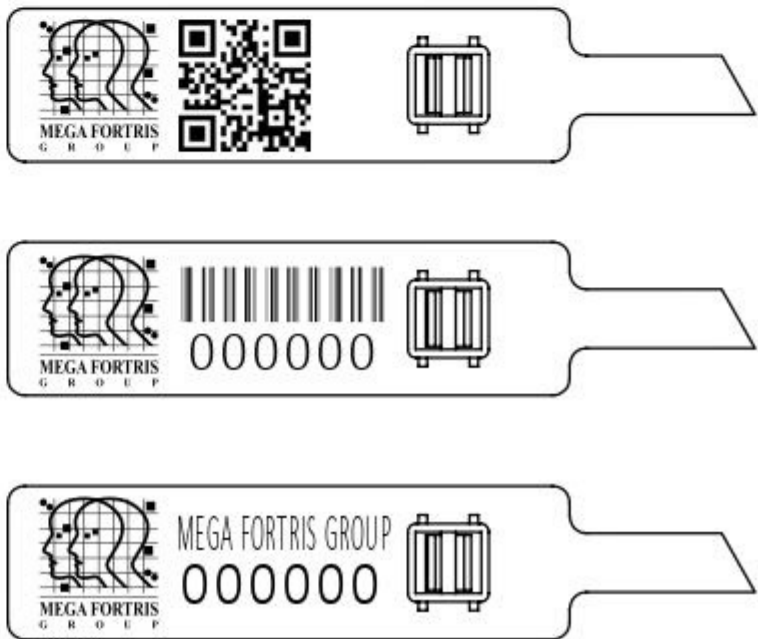


PREVENTION · PROTECTION · PEACE OF MIND

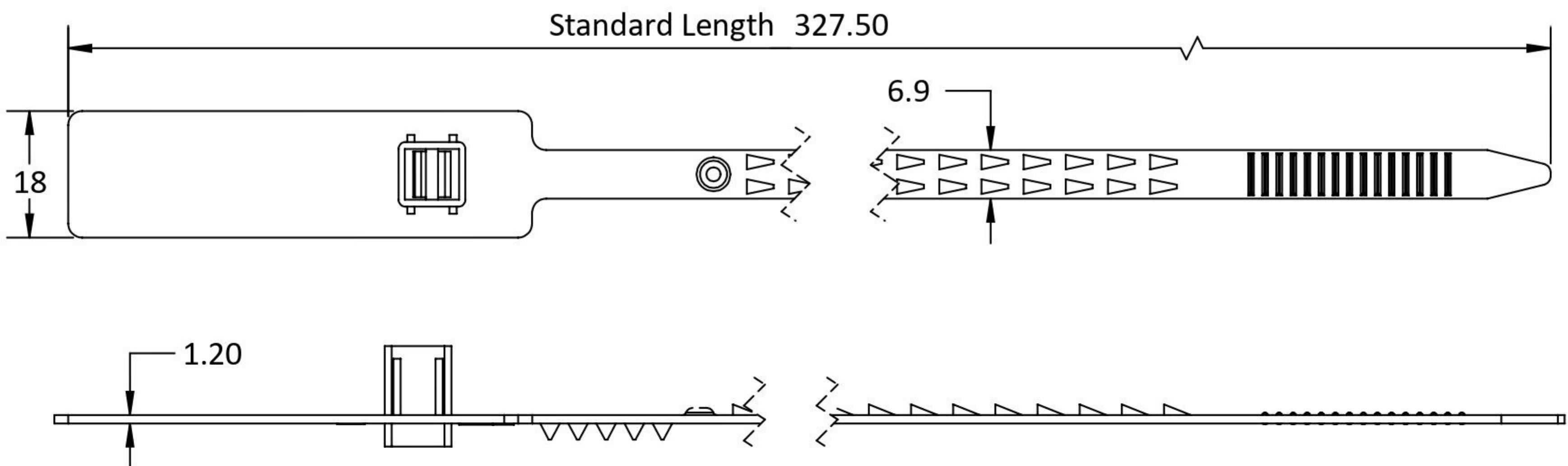




LASER MARKING OPTION



- 1** The Fort Twin Lock features a double locking mechanism in its fully high-impact PP moulded body for added security and durability while withstanding extreme weather conditons of -20°C to 80°C.
- 2** The locking ribs on the seal provide better grip and stronger endurance during application. Tamper evidence signs are obvious on the strap.
- 3** Optional spikes are placed behind the seal to provide better gripping on the application surface.
- 4** The larger flap allows ample space for identifier marking. Irreversible identifiers such as name, logo, barcode, serial number and QR code are laser-marked on the flap.
- 5** Biodegradable additives for plastic material are available.



TECHNICAL SPECIFICATIONS

PRODUCT - FORT TWIN LOCK (FTL)

| Code | Material | Locking Length | Locking Size | Tensile Strength | Marking Area | Max Marking Digits |
|------|---|--------------------|--------------------|------------------------|-----------------------------|-------------------------------|
| FTL | Plastic : High-impact Polypropylene (PP) | 223 mm (8.8 in) | 6.9 mm (0.3 in) | >15 kgf (>33.1 lbf) | 14 X 35 mm 0.6 x 1.4 in) | Serial no : 10 Barcode : 8 |

PACKAGING

| Carton | Quantity | Dimensions (mm) | Gross Weight (kg) | Volume (m³) | Standard Pastel Colours |
|--------|----------|---|-------------------|----------------------|---|
| Inner | 1000 | 454 x 234 x 284 (17.9 x 9.2 x 11.2 in) | 4.65 (10.3 lb) | 0.03 (1.1 cu.ft.) | Body : WH PSYL PSOR PSRD PSBL PSGN For colour customisations, kindly contact us for further information. |

Updated Date : 27 November 2020