

## INDICATIVE SEAL

### MEGA POS SEAL (MPT)

Pull-Tight Seal

***Ruler-like designed locking strap for industry security needs.***

The Mega Pos Seal is a plastic indicative seal with a brief measurement ruler embedded at the back of the seal. With its longer default length, the seal is suitable to secure assets in any kind of carrier. Besides, the embedded ruler can be utilized as a tool for security measurement.

#### Applications:

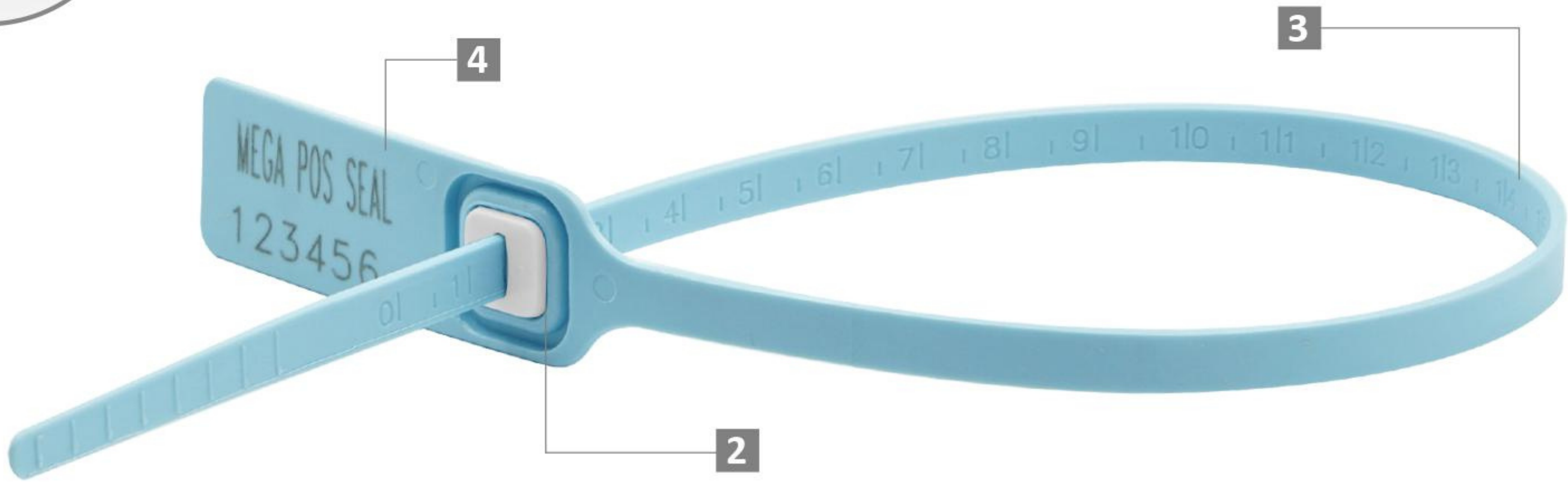
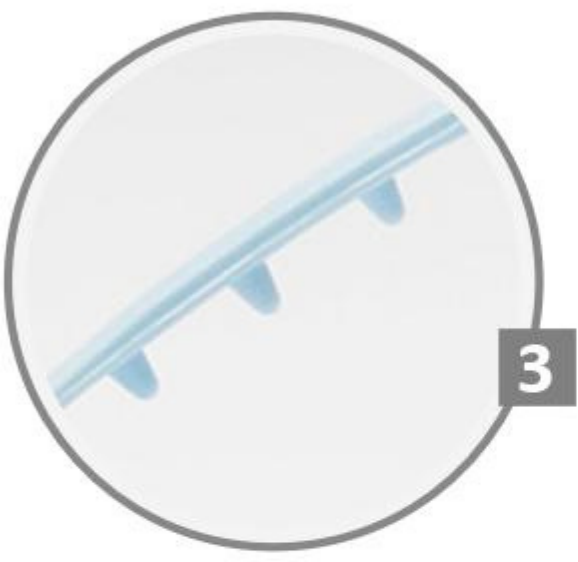
- Retail Applications
- Postal Services
- Logistics
- Banking



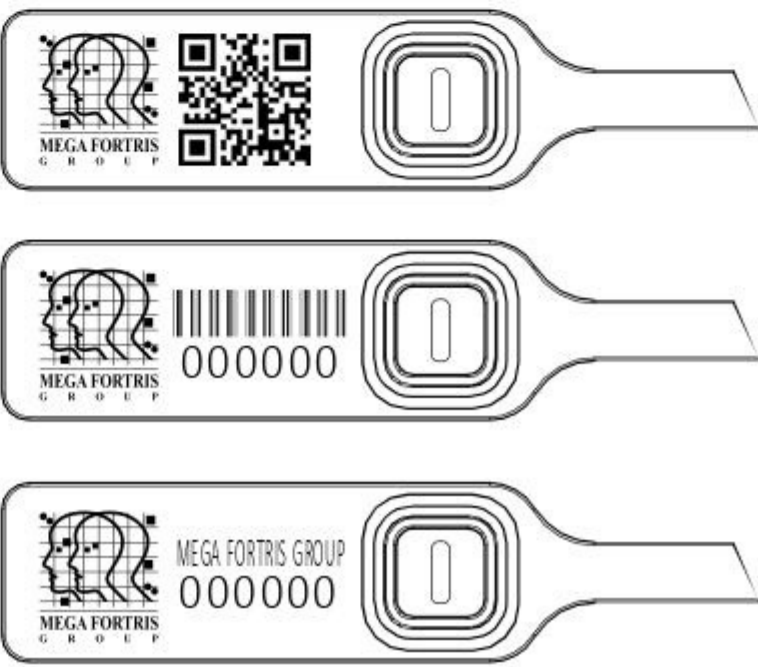
PREVENTION • PROTECTION • PEACE OF MIND



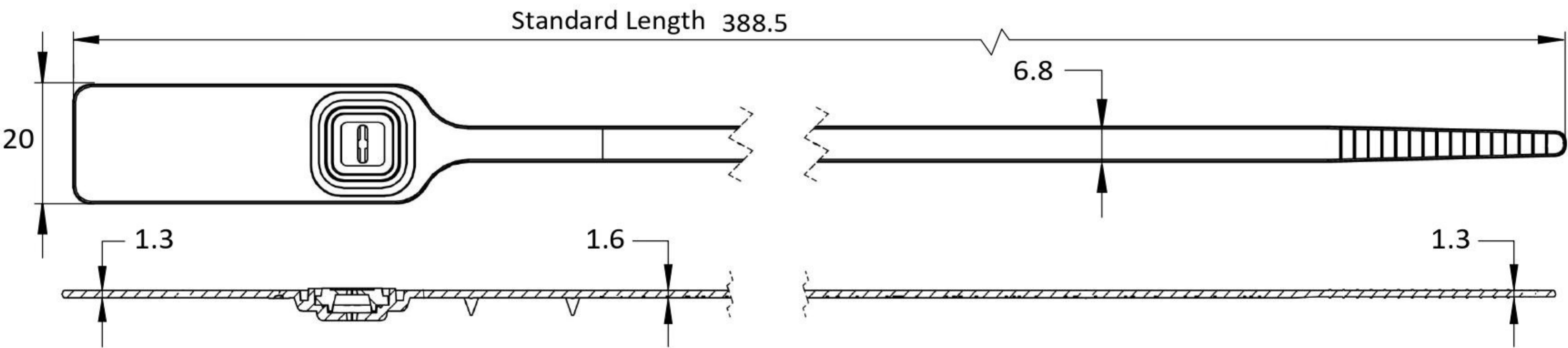




LASER MARKING OPTION



- 1 The Mega Pos Seal is moulded with high-impact PP material with metal lock encapsulated to complement the long thick strap while withstanding extreme weather conditons of -20°C to 80°C.
- 2 One-way locking mechanism is embedded for fast and easy application.
- 3 The strap is designed with a brief ruler at the back for measuring and tamper-evident indication.
- 4 Spikes are placed behind the seal to provide better gripping on the application surface.
- 5 Irreversible identifiers such as name, logo, barcode, serial number and QR code are laser-marked on the flap.
- 6 Biodegradable additives for material are available.



TECHNICAL SPECIFICATIONS

PRODUCT - MEGA POS SEAL (MPT)

Code	Material	Locking Length	Locking Size	Tensile Strength	Marking Area	Max Marking Digits
MPT	<b>Plastic :</b> High-impact Polypropylene (PP) <b>Metal Jaw :</b> Stainless Steel (SUS 304)	300 mm (12 in)	6.8 mm (0.3 in)	>25 kgf (>55.1 lbf)	20 x 40 mm (0.8 x 1.6 in)	<b>Serial no : 15</b> <b>Barcode : 13</b>

PACKAGING

Carton	Quantity	Dimensions (mm)	Gross Weight (kg)	Volume (m³)	Standard Pastel Colours
Inner	1000	465 x 260 x 190 (18.3 x 10.6 x 6.7 in)	TBC	0.023 (0.8 cu.ft.)	Body : WH PSYL PSOR PSRD PSBL PSGN Cap : WH TRNS

For colour customisations, kindly contact us for further information.

Updated Date : 27 November 2020