

INDICATIVE SEAL

DOMINO SP (DMSP)

Fixed Length Seal

Flexible metal strap and large marking area for durable indicative security.

Domino SP is a fixed length metal strap seal in Mega Fortris indicative seal range. The metal strap is flexible with a large flap for identifiers marking. The seal is designed to settle close to the application surface, preventing damage during rough handling. It is versatile for securing and authentication tagging purposes.

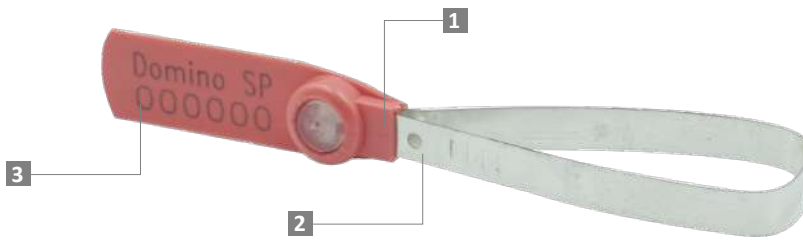
Applications:

- Retail Applications
- Chemical and Oil Refinery
- Warehousing and Logistics
- Authentication Tagging

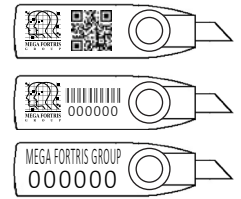


PREVENTION · PROTECTION · PEACE OF MIND





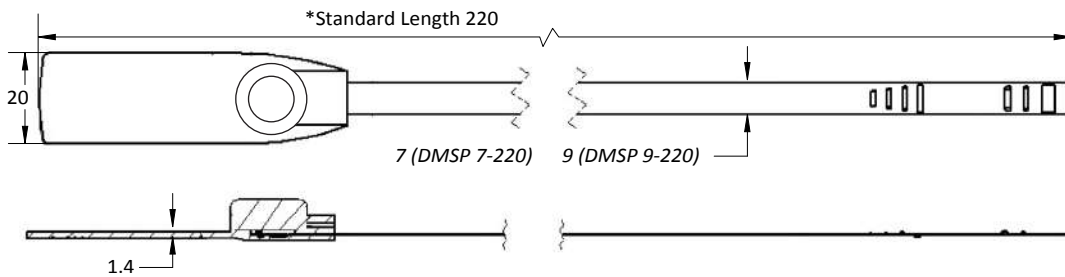
LASER MARKING OPTION



VIEW APPLICATION GIF



- 1 The Domino SP seal is moulded with Polypropylene (PP) material ultrasonically welded over a tin-plated metal strap.
- 2 One-way locking mechanism is embedded for fast and easy application.
- 3 Irreversible identifiers such as name, logo, barcode, serial number and QR code are laser-marked on the flap.
- 4 Biodegradable additives for the plastic material are available.
- 5 Different strap lengths are available to cater to different applications.



TECHNICAL SPECIFICATIONS

| PRODUCT -DOMINO SP (DMSP) | | | | | | |
|---------------------------|--|------------------|------------------|--------------------------------|---------------------------|--------------------|
| Code | Material | Locking Length | Locking Size | Tensile Strength | Marking Area | Max Marking Digits |
| DMSP 7-220 | Plastic : Polypropylene (PP) Temperature Range: -5°C to 80°C Strap : Tin-plated Metal | 220 mm (9 in) | 7 mm (0.3 in) | 72-82 kgf (158.7-180.8 lbf) | 16 x 41 (0.6 x 1.6 in) | Serial no : 10 |
| DMSP 9-220 | | | 9 mm (0.4 in) | | | |

| PACKAGING | | | | | Standard Pastel Colours | |
|------------------|----------|---|-------------------|----------------------|---|--|
| Carton | Quantity | Dimensions (mm) | Gross Weight (kg) | Volume (m³) | Flap : | Cap : |
| DMSP 7-220 Inner | 1000 | 362 x 222 x 255 (14.3 x 8.7 x 10.0 in) | 6.4 (14.1 lb) | 0.02 (0.7 cu.ft.) | <input type="checkbox"/> WH <input type="checkbox"/> PSYL <input type="checkbox"/> PSOR <input type="checkbox"/> PSRD <input type="checkbox"/> PSBL <input type="checkbox"/> PSGN | <input type="checkbox"/> TRNS <input type="checkbox"/> WH <input type="checkbox"/> MILKY (BIO) |
| DMSP 9-220 Inner | | | 7.5 (16.5 lb) | | For colour customisations, kindly contact us for further information. | |

Updated Date : 17 August 2021