

MEGA FORTRIS
G R O U P

SECURITY SEAL

MINI CABLE LOCK ZINC 250 (MCLZ 250)

Pull-Tight Barrier Seal

Bright colours for defined identification.

Mini Cable Lock Zinc 250 is a security cable seal with a special entry point designed to prevent tampering attacks. The seal has a vibrant plastic moulded body, allowing distinctive identification and security. Biodegradable option for the plastic material is available.

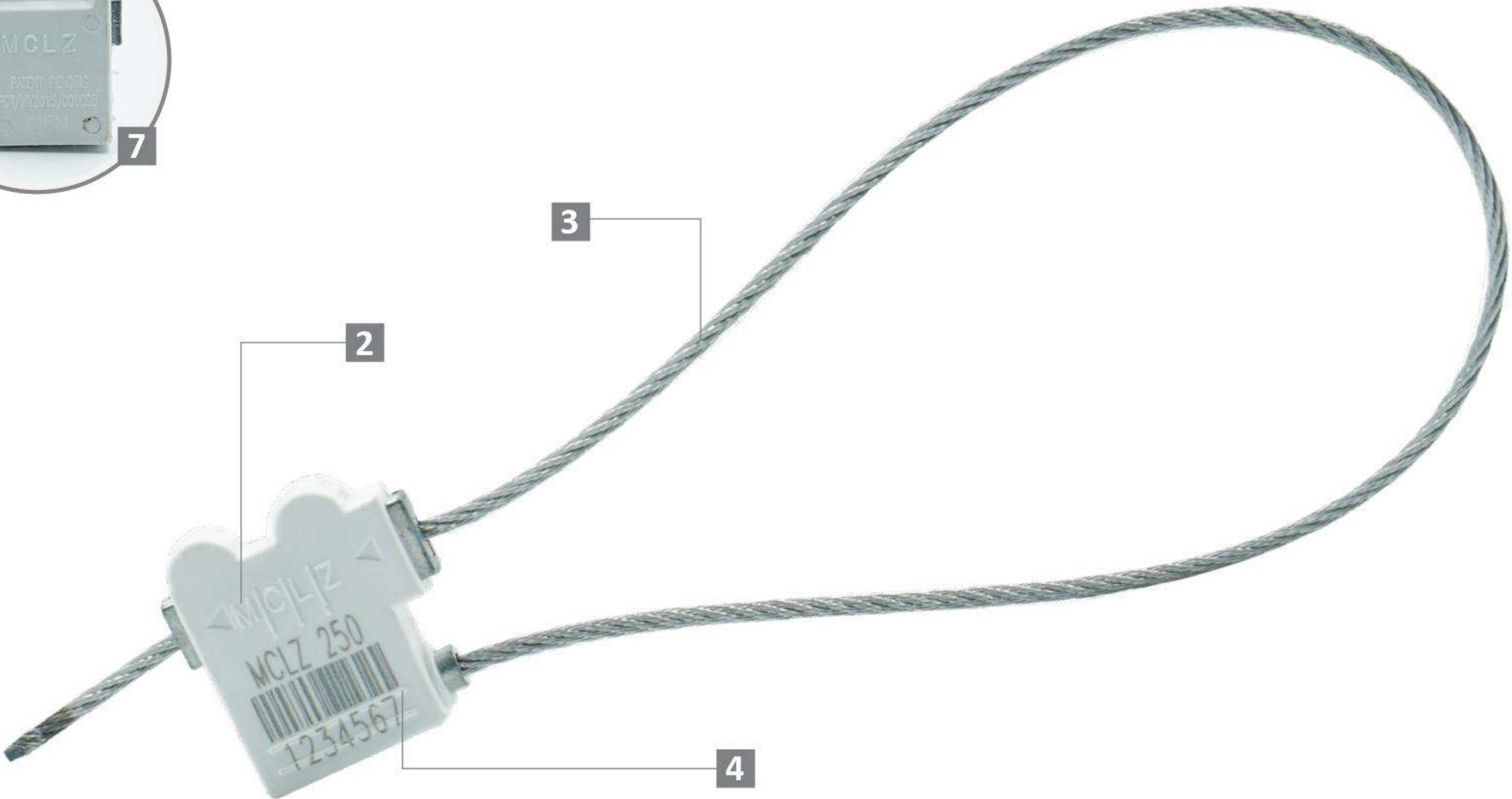
Applications:

- Valve Sealing
- Retail Applications
- Logistics
- Banking

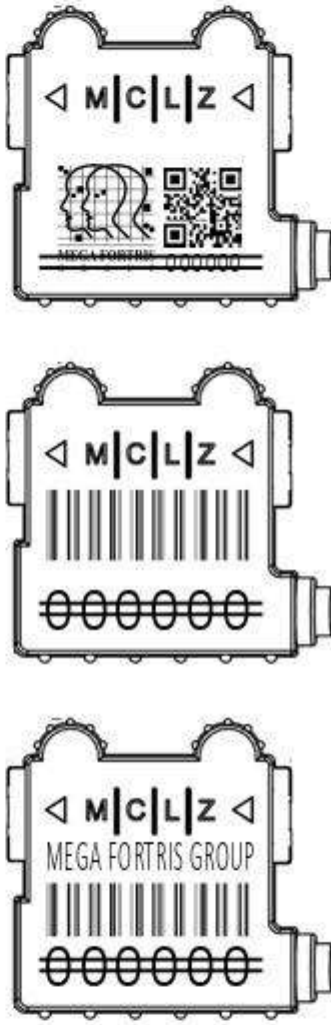


PREVENTION • PROTECTION • PEACE OF MIND

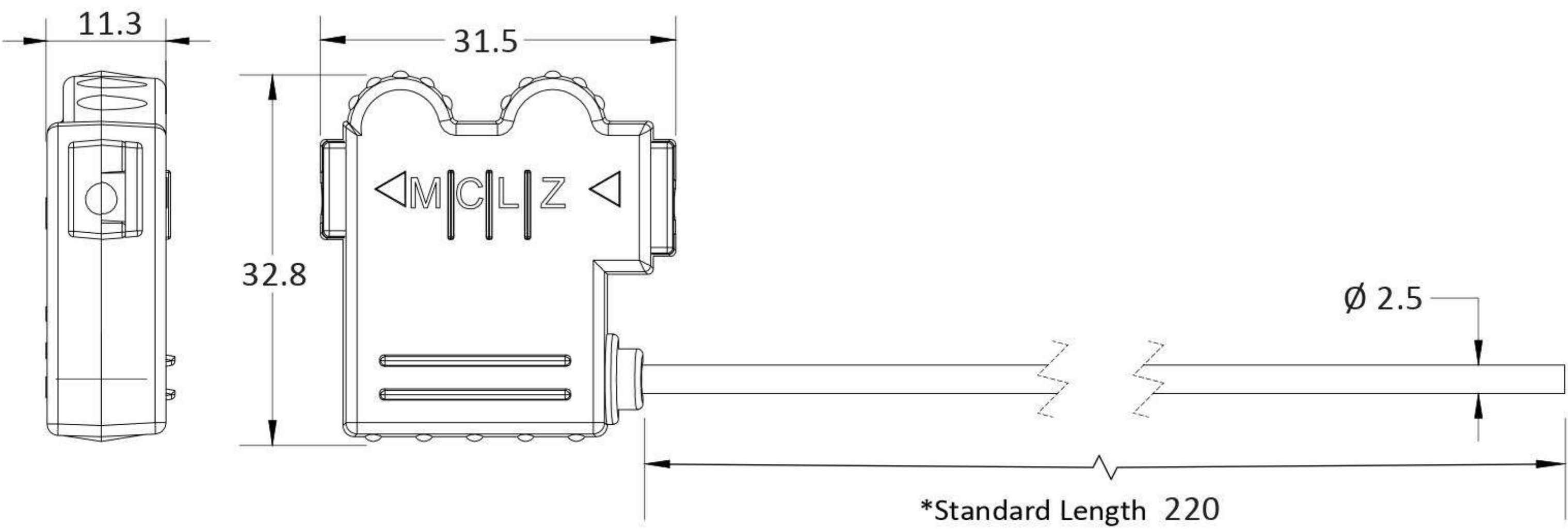




LASER MARKING OPTION



- 1 Unique to the security seal industry, this 3rd generation high-security cable seal features a lock body design that is non-linear and provides evidence of tampering.
- 2 PP plastic with vibrant pastel colour is moulded over the zinc lock cover to enable distinct colour coding and laser marking of identifiers such as name, logo, barcode, serial number and QR code.
- 3 The non-preformed galvanised steel wire unravels upon cutting, hence showing clear tamper evidence.
- 4 Ribbed design on the body prevents tampering on the identifier.
- 5 Biodegradable additives for plastic material are available.
- 6 Plastic material can withstand extreme weather conditions, -25°C to 80°C.



TECHNICAL SPECIFICATIONS

*Customisable cable length upon request.

PRODUCT - MINI CABLE LOCK ZINC 250 (MCLZ 250)

| Code | Material | Cable Length | Cable Diameter | Tensile Strength | Marking Area | Max Marking Digits |
|----------|--|--------------------|----------------------|-------------------------|------------------------------|--|
| MCLZ 250 | Body : Zinc Plastic : Polypropylene (PP) Locking Component : Hardened Steel Cable : Galvanised Steel Wire | 220 mm (8.7 in) | Ø 2.5 mm (0.1 in) | ≥350 kgf (≥29.8 lbf) | 19 x 22 mm (0.7 x 0.9 in) | Serial no : 9 Barcode : 7 |

PACKAGING

| Carton | Quantity | Dimensions (mm) | Gross Weight (kg) | Volume (m³) | Standard Pastel Colours |
|--------|----------|--|-------------------|-----------------------|---|
| Inner | 400 | 450 x 250 x 135 (17.7 x 9.8 x 5.3 in) | 12.5 (27.6 lb) | 0.015 (0.5 cu.ft.) | Body : WH PSYL PSOR PSRD PSBL PSGN |

For colour customisations, kindly contact us for further information.

Carton size and weight vary according to cable length. Figures shown in the table are for the standard cable length packaging. Please contact us for additional details.

Updated Date : 21 January 2021