

INDICATIVE SEAL

MINI FORT SINGLE LOCK (MFSL)

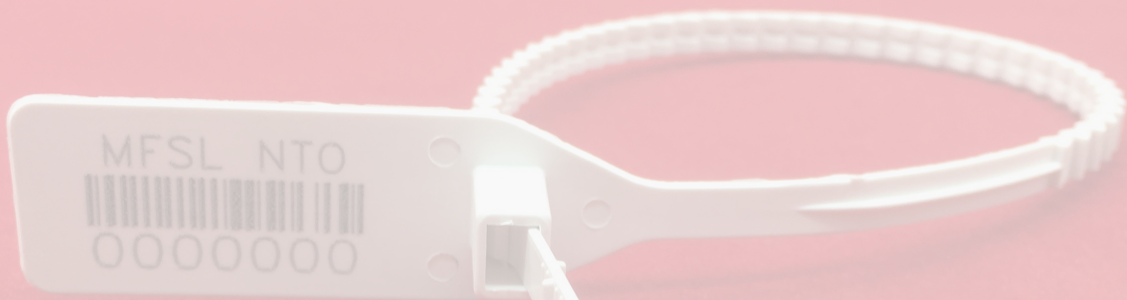
Pull-Tight Seal

Comprehensive security feature in a compact structure.

Mini Fort Single Lock is an indicative plastic seal with comprehensive features for security requirements. It has a double locking mechanism with ribs-structured strap to give clear signs of tamper evidence. It is designed with spikes at the back for better gripping. With a body fully made of plastic material, full decomposition is achievable.

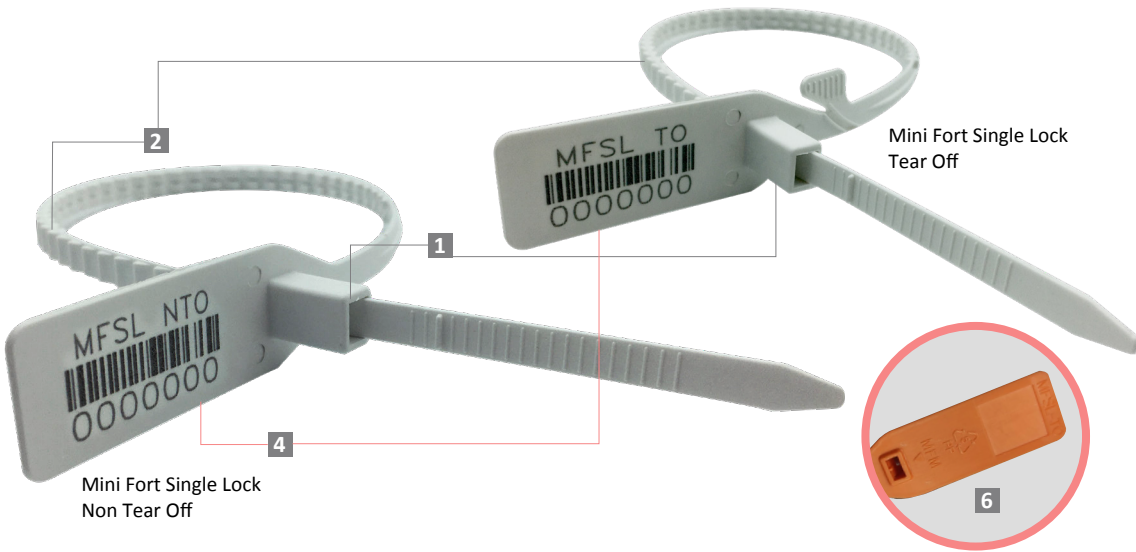
Applications:

- Retail Applications
- Postal Services
- Logistics
- Banking

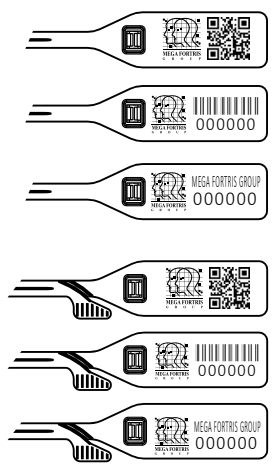


PREVENTION · PROTECTION · PEACE OF MIND





LASER MARKING OPTION



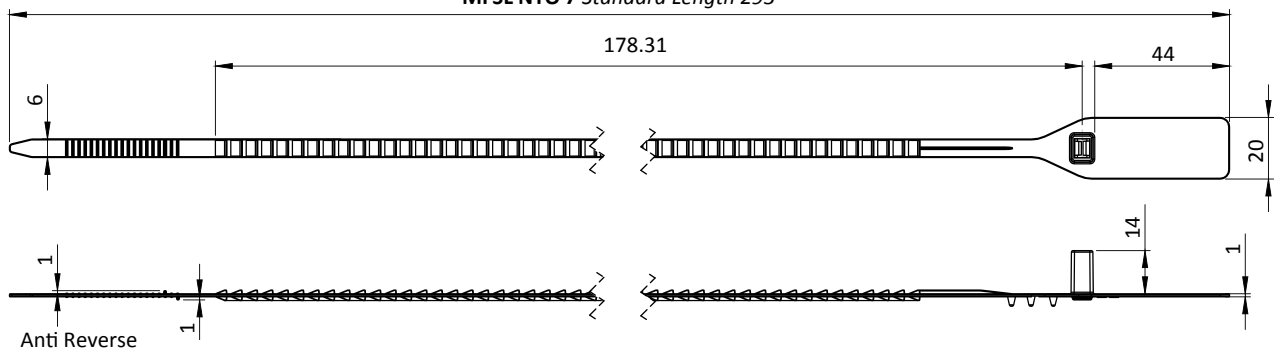
VIEW APPLICATION GIF



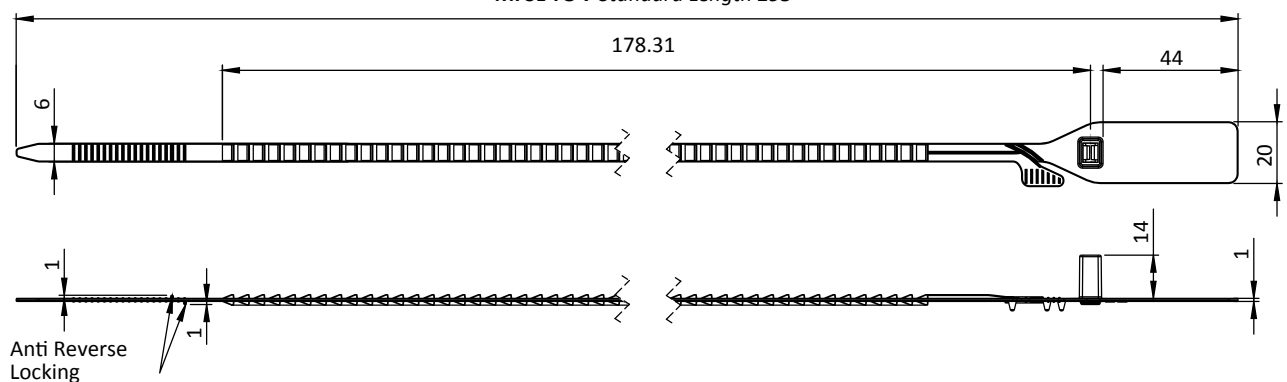
- 1** The Mini Fort Single Lock (NTO & TO) features a double locking mechanism in its fully Polypropylene (PP) moulded body for added security and durability.
- 2** The locking ribs on the seal provide better grip and stronger endurance during application. Tamper evidence signs are obvious on the strap.
- 3** Spikes are placed behind the seal to provide better grip on the application surface.
- 4** The larger flap allows ample space for identifier marking. Irreversible identifiers such as name, logo, barcode, serial number and QR code are laser-marked on the flap.
- 5** Biodegradable additives for plastic material are available.
- 6** Special offering, a customize embedded logo back of the seal's flap.

Mini Fort Single Lock 7

MFSL NTO 7 Standard Length 293

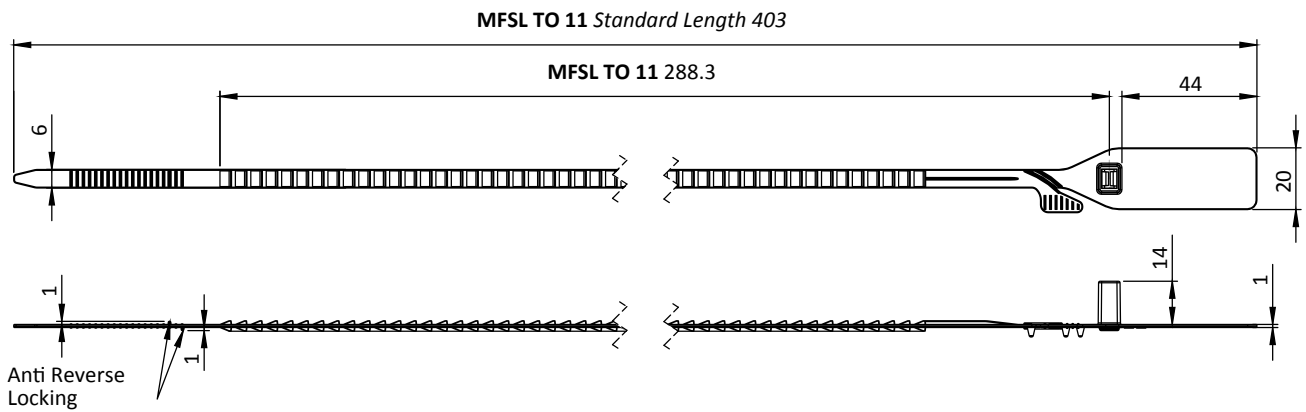
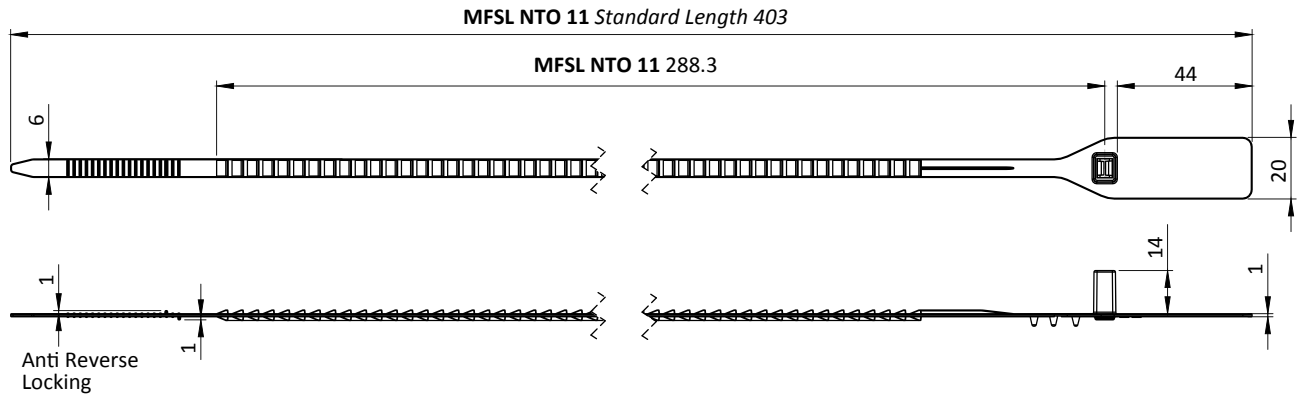


MFSL TO 7 Standard Length 293



Updated Date : 16 June 2023

Mini Fort Single Lock 11



TECHNICAL SPECIFICATIONS

PRODUCT - MINI FORT SINGLE LOCK 11 (MFSL 11 NTO)

Code	Material	Locking Length	Locking Size	Tensile Strength	Marking Area	Max Marking Digits
MFSL 7 NTO	Plastic : Polypropylene (PP)	178.3 mm (7 in)	6 mm (0.24 in)	>25 kgf (>55.1 lbf)	16 X 40 mm (0.6 x 1.6 in)	Serial no : 10 Barcode : 10
MFSL 7 TO	Plastic : Polypropylene (PP)	178.3 mm (7 in)	6 mm (0.24 in)	>25 kgf (>55.1 lbf)	16 X 40 mm (0.6 x 1.6 in)	Serial no : 10 Barcode : 10
MFSL 11 NTO	Plastic : Polypropylene (PP)	288.3 mm (11.4 in)	6 mm (0.24 in)	>25 kgf (>55.1 lbf)	16 X 40 mm (0.6 x 1.6 in)	Serial no : 10 Barcode : 10
MFSL 11 TO	Plastic : Polypropylene (PP)	288.3 mm (11.4 in)	6 mm (0.24 in)	>25 kgf (>55.1 lbf)	16 X 40 mm (0.6 x 1.6 in)	Serial no : 10 Barcode : 10

PACKAGING

Carton	Quantity	Dimensions (mm)	Gross Weight (kg)	Volume (m ³)	Standard Pastel Colours
Inner	1000	TBC	TBC	TBC	Body : WH PSYL PSOR PSRD PSBL PSGN PSGN

For colour customisations, kindly contact us for further information.

Updated Date : 27 July 2023