

INDICATIVE SEAL

MEGA TWISTER TACHOGRAPH (MTW-T)

Application Seal

A certified fundamental and economical seal for quick utility security.

The Mega Twister Tachograph is a utility seal designed with essential tamper-evident features. The seal's twister locking insert allows for quick and easy sealing of the application. Colour coded inserts and ample identifier marking area eases operations. The seal is small in size and versatile for any securing and identifying purposes.

This seal is also EN16882:2017 certified and is required for security seal devices used in the tachograph working environment.

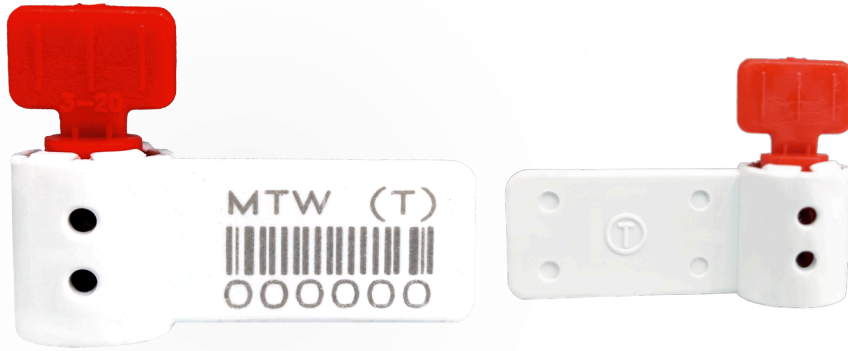
Applications:

- Tachographs
- Utility Meters & Scales
- Chemical and Oil Refinery
- Transportation
- Banking



PREVENTION · PROTECTION · PEACE OF MIND



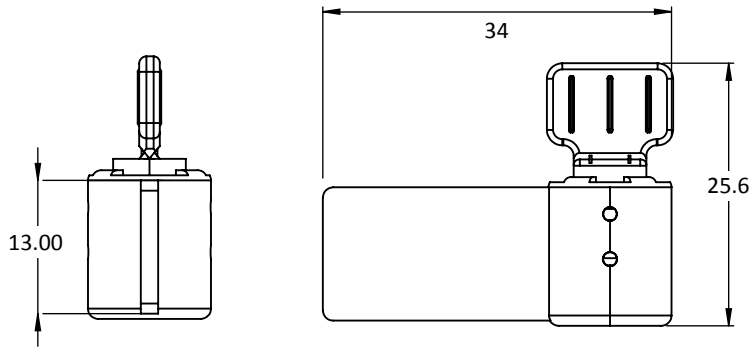


- 1 The Mega Twister Tachograph is moulded with a twister locking insert in a plastic acetal body for improved security.
- 2 Stainless steel wire is required for the twister locking to achieve quick and tight securing of the seals.
- 3 A marking area flap is placed on the side for irreversible laser marking of identifiers such as name, logo, serial number and QR code.
- 4 Colour coding is possible with a combination of solid plastic body and vibrant colour insert, which is available in a wide range of choices.
- 5 Biodegradable additives for plastic material are available.
- 6 EN16882 certified for use in tachograph environments.

LASER MARKING OPTION



VIEW APPLICATION GIF



TECHNICAL SPECIFICATIONS

PRODUCT - MEGA TWISTER TACHOGRAPH (MTW-T)

Code	Material	Locking Length	Locking Size	Tensile Strength	Marking Area	Max Marking Digits
MTW-T	Plastic body: ACETAL / Polyoxymethylene (POM) Temperature range: -40°C to 135°C	250 mm (9.8 in)	Ø 2.5 mm (0.98in)	25-30 kgf (55-66 lbf)	13 mm x 22 mm (0.5 in x 0.9 in)	Serial no : 6 Barcoder : 6
	Plastic insert: ACETAL / Polyoxymethylene (POM) Temperature range: -40°C to 135°C Cable: Plastic-coated Stainless Steel 304 (SUS 304)					

PACKAGING

Carton	Quantity	Dimensions (mm)	Gross Weight (kg)	Volume (m ³)	Standard Colours
Inner	2500 with wire	255 x 205 x 145 mm (10 x 8.1 x 5.7 in)	2.5 (5.5 lb)	0.008 (0.283 cu. ft.)	Body : BC BC
	5000 with precut wire <64 cm				Insert : WH YL OR GN RD BL

For colour customisations, kindly contact us for further information.

Updated Date : 11 October 2022