


SECURE

System : 3 phase 4 wire  
Voltage : 3 x 230/400V  
Current : 3 x 10 - 100A  
Frequency : 50Hz  
Test LED   
800 Pulses/Unit

kWh Cl. 1.0  
kVArh Cl. 2.0



**MEGA FORTRIS**  
G R O U P

## INDICATIVE SEAL

### MEGA TWISTER SP (MTWSP)

#### Application Seal

***Extensive range of designs for a variety of identifying purposes.***

The Mega Twister SP seal range consists of multiple identifier placement options to accommodate different requirements. Their simple locking mechanism makes the seals user friendly and versatile for different applications. The seals are small in size and space saving.

#### Applications:

- Utility Meters & Scales
- Chemical and Oil Refinery
- Transportation
- Banking

C1 O1 C2 O2 RS232

Mega Twister SP BC  
0000000

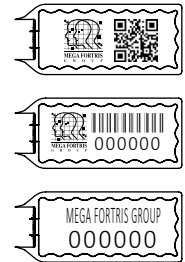


PREVENTION · PROTECTION · PEACE OF MIND





**LASER MARKING OPTION**



- 1 The Mega Twister SP seals are moulded with a twister locking insert and white cap ultrasonically welded in high-impact plastic transparent body for a clear view of the locking and tamper-evidence.
- 2 Stainless steel wire is required for the twister locking to achieve quick and tight securing of the seals.
- 3 The laser marking area of each design is placed differently with the options of horizontal area on the side (MTW SP), at the bottom (MTW SP BC), and vertical area at the bottom (MTW SP BCV).
- 4 The laser marking area is sufficient for irreversible essential identifiers such as name, logo, barcode, serial number and QR code.
- 5 Colour coding is possible with a combination of clear plastic body and vibrant colour insert available in a wide range of choices.
- 6 Biodegradable additives for plastic material are available.

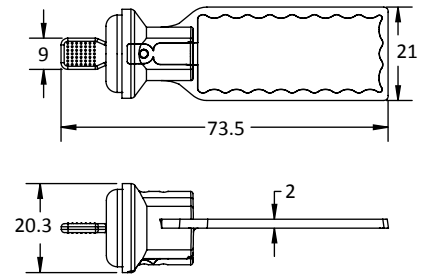
**MTW SP**

**MTW SP BC**

**MTW SP BCV**

DRAWING TO COME @FUAD

DRAWING TO COME @FUAD



**TECHNICAL SPECIFICATIONS**

**PRODUCT - MEGA TWISTER SP (MTW SP)**

Code	Material	Locking Length	Locking Size	Tensile Strength	Marking Area	Max Marking Digits
<b>MTW SP</b>	<b>Plastic body:</b> High-impact Polycarbonate (PC)	250 mm (9.8 in)	Ø 0.8 mm (0.03 in)	>30 kgf (>66 lbf)	TBC	TBC
<b>MTW SP BC</b>	<b>Plastic insert:</b> Acetal				36 x 9.0 mm (1.4 x 0.4 in)	<b>Serial no : 13</b> <b>Barcode : 13</b>
<b>MTW SP BCV</b>	<b>Cable:</b> Stainless Steel 304 (SUS 304) Plastic Coated				12 x 34 mm (0.5 x 1.3 in)	

**PACKAGING**

Carton	Quantity	Dimensions (mm)	Gross Weight (kg)	Volume (m³)	Standard Colours
<b>MTW SP</b> Inner	1000	338 x 255 x 190 mm (13.3 x 10 x 7.5 in)	4.68 (10.3 lb)	0.016 (0.565 cu. ft.)	<b>Body :</b> <input type="button" value="TRNS"/> <b>Cap :</b> <input type="button" value="WH"/> <b>Insert :</b> <input type="button" value="WH"/> <input type="button" value="YL"/> <input type="button" value="OR"/> <input type="button" value="GN"/> <input type="button" value="RD"/> <input type="button" value="BL"/>
<b>MTW SP BC</b> Inner		284 x 254 x 299 mm (11.2 x 10 x 11.8 in)	5.14 (11.3 lb)	0.022 (0.777 cu. ft.)	
<b>MTW SP BCV</b> Inner		568 x 235 x 180 mm (22.4 x 9.3 x 7.1 in)	6.54 (14.4 lb)	0.024 (0.848 cu. ft.)	

Carton size and weight vary according to cable length. Figures shown in the table are for the standard cable length packaging. Please contact us for additional details.

**Updated Date : 06 February 2021**