

INDICATIVE SEAL

FAST SEAL (FS)

Pull-Tight Seal

Versatile security seal for various industry needs.

Fast Seal is the icon in the indicative family offering various options for strap length to complement the application. Its slim round strap makes it suitable for small hole latches. This is the most versatile choice for security and authentication purposes.

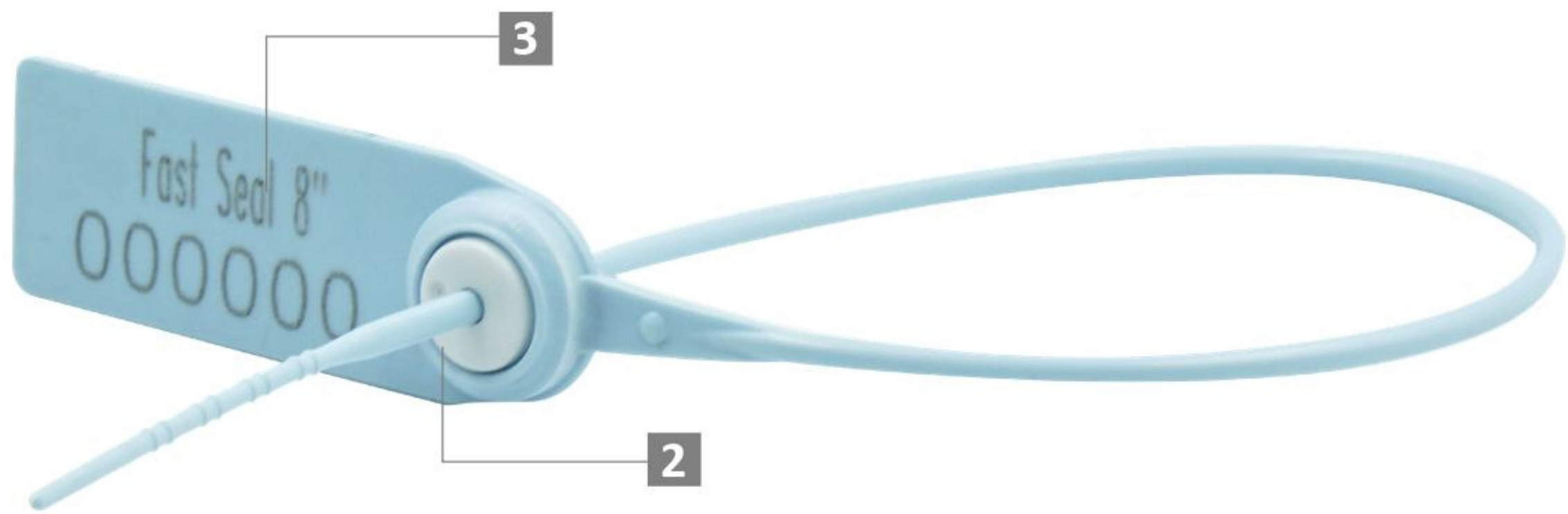
Applications:

- Retail Applications
- Authentication Tagging
- Logistics
- Banking

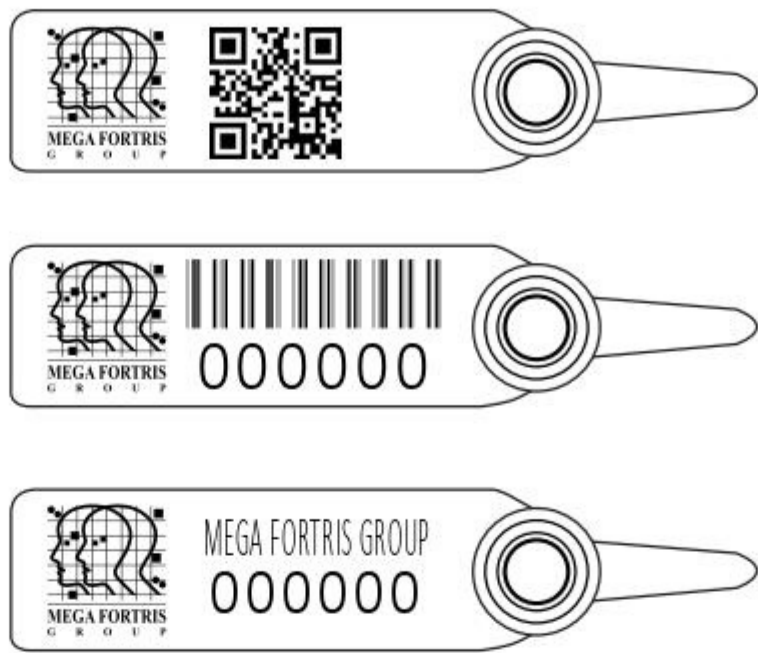


PREVENTION • PROTECTION • PEACE OF MIND

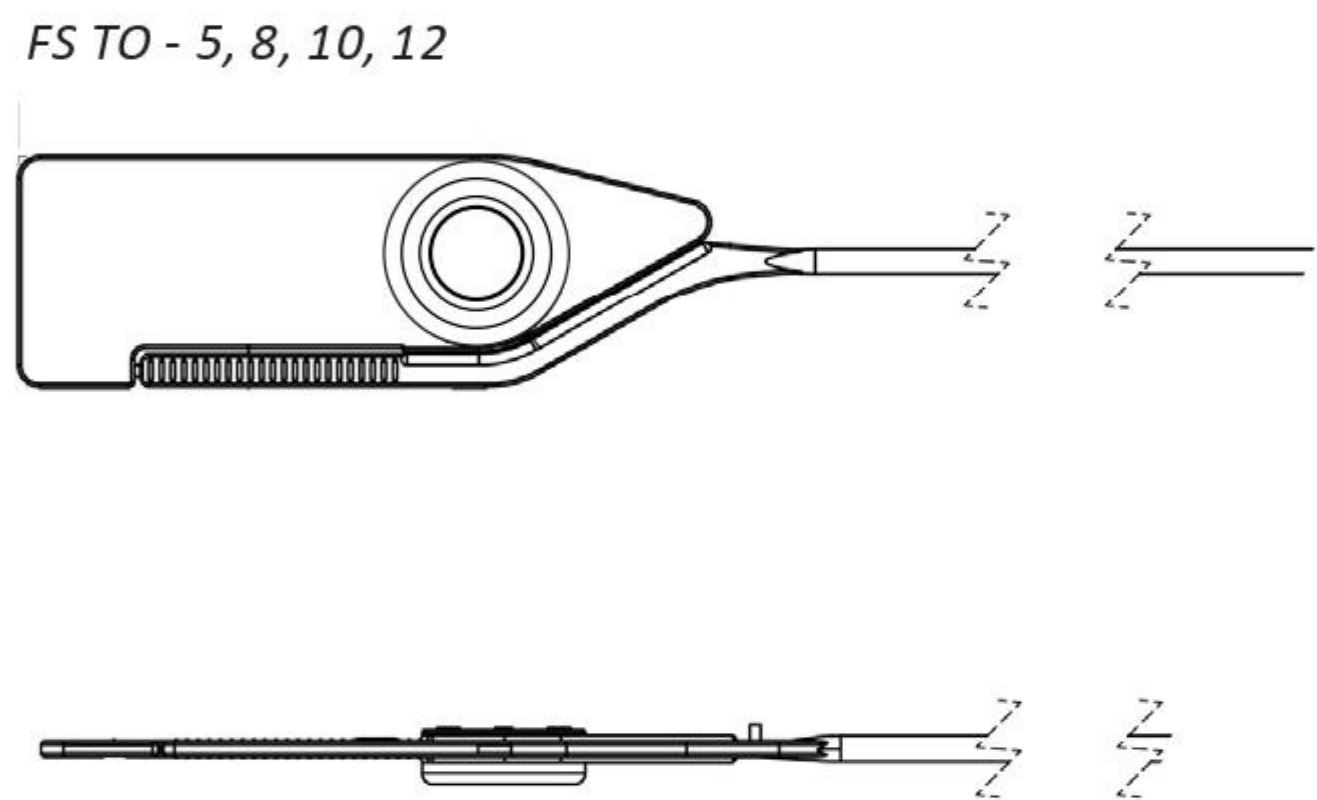
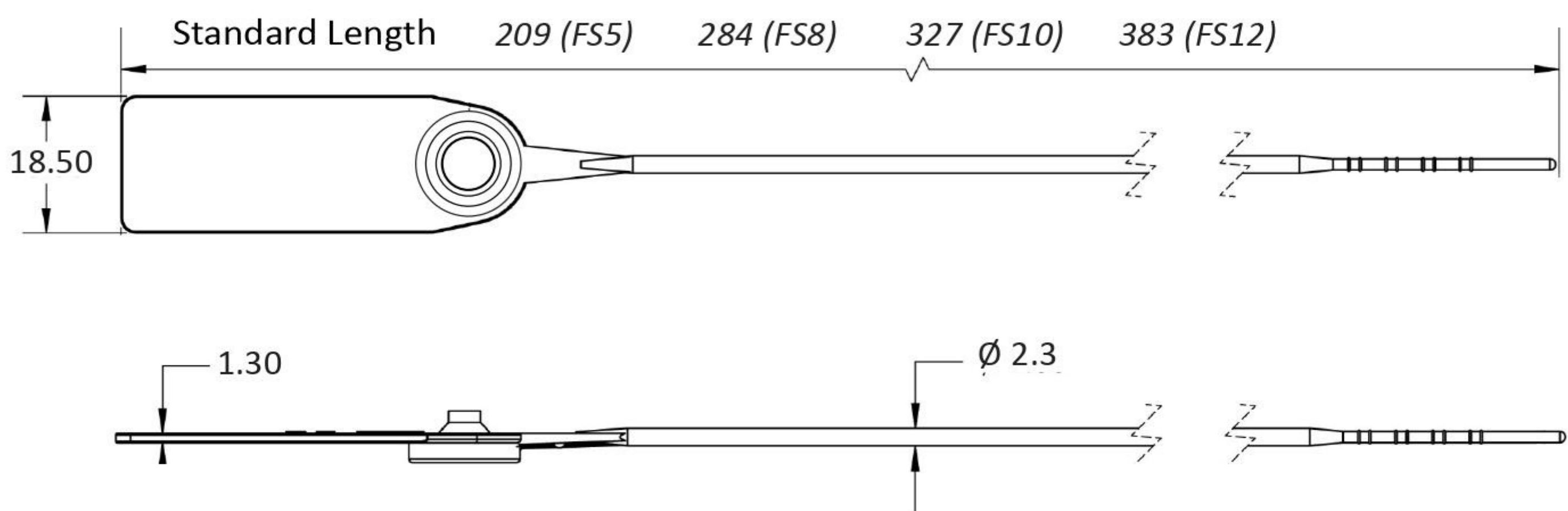




LASER MARKING OPTION



- 1 The Fast Seal is moulded with PP or high-impact NY material with encapsulated metal lock for greater security and clear tamper-evidence.
- 2 One-way locking mechanism is embedded for fast and easy application.
- 3 Irreversible identifiers such as name, logo, barcode, serial number and QR code are laser-marked on the flap.
- 4 Biodegradable additives for plastic material are available.
- 5 Different strap lengths are available to cater to different applications.
- 6 Tear-off (TO) variation available in 5" and 8" for easy removal.



TECHNICAL SPECIFICATIONS

PRODUCT - FAST SEAL (FS)						
Code	Material	Locking Length	Locking Size	Tensile Strength	Marking Area	Max Marking Digits
FS5	Plastic : Polypropylene (PP) <i>Operational Temperature Range:</i> -5°C to 80°C High-impact Nylon (NY) <i>Operational Temperature Range:</i> -25°C to 80°C	128 mm (5 in)	Ø 2.3 mm (0.1 in)	PP: ≥15 kgf (≥33.1 lbf) NY: ≥18 kgf (≥39.7 lbf)	14 x 34 mm (0.6 x 1.3 in)	Serial no : 13 Barcode : 12
FS8		203 mm (8 in)				
FS10		245 mm (10 in)				
FS12	Metal Jaw : Stainless Steel (SUS 304)	301 mm (12 in)				

PACKAGING

Carton	Quantity	Dimensions (mm)	Gross Weight (kg)	Volume (m³)	Standard Pastel / Solid Colours
FS5 Inner	1000	279 x 225 x 190 (11.0 x 8.9 x 7.5 in)	2.3 - 2.65 (5.1- 5.8 lb)	0.012 (0.4 cu.ft.)	<div>Polypropylene :</div> <div>Body : <div>WH</div><div>PSYL</div><div>PSOR</div><div>PSRD</div><div>PSBL</div><div>PSGN</div></div> <div>Cap : <div>TRNS</div><div>WH</div><div>MILKY (BIO)</div></div> <div>Nylon :</div> <div>Body : <div>WH</div><div>B</div><div>YL</div><div>G</div><div>RD</div></div> <div>Cap : <div>TRNS</div><div>WH</div><div>MILKY (BIO)</div></div> <div>For colour customisations, kindly contact us for further information.</div>
FS8 Inner		450 x 195 x 165 (17.7 x 7.7 x 6.5 in)	2.68 - 3.01 (5.91- 6.64 lb)	0.014 (0.5 cu.ft.)	
FS10 Inner			2.61 - 3.17 (5.75 - 6.99 lb)		
FS12 Inner			3.14 - 3.25 (6.92 - 7.17 lb)		

Updated Date : 20 January 2021