

INDICATIVE SEAL

FORT CASH BAG SEAL (FCBS)

Pull-Tight Seal

Indicative seal paradigm for security and authentication.

Fort Cash Bag Seal is a classic indicative seal with flat strap for tight securing of assets. With a variety of options for strap length and greater space for laser marking. The spikes on the back and locking ribs on both sides of the seal give enhanced security and tamper-evidence.

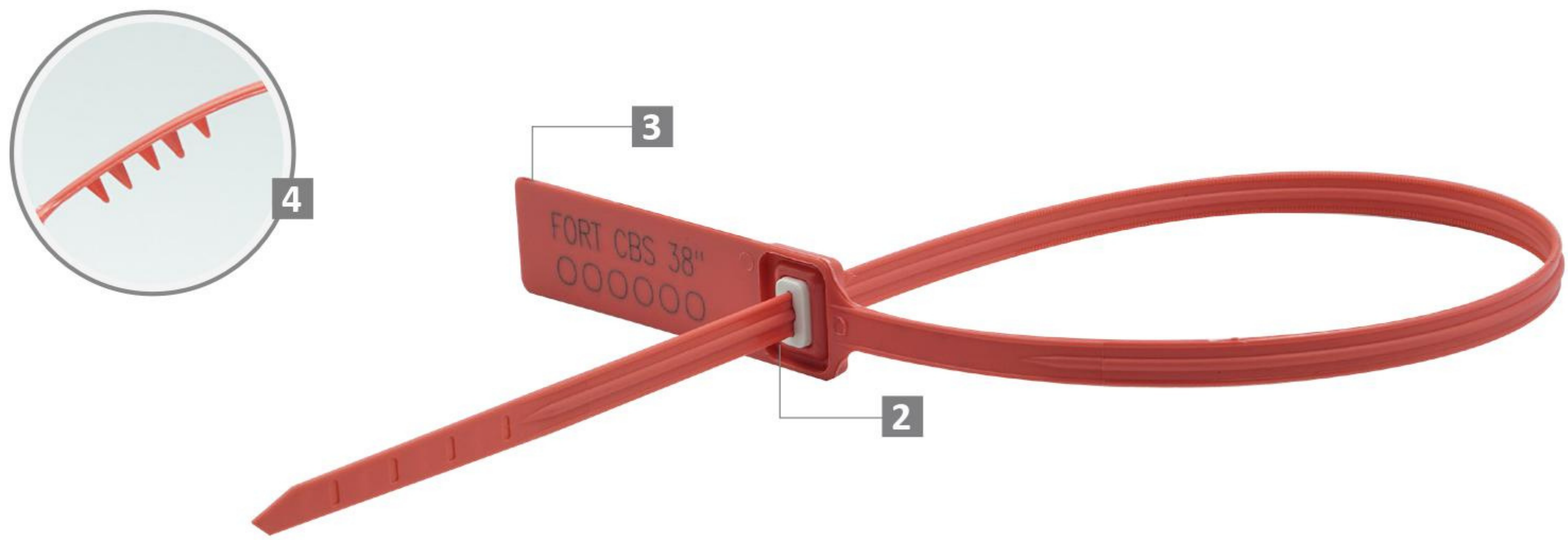
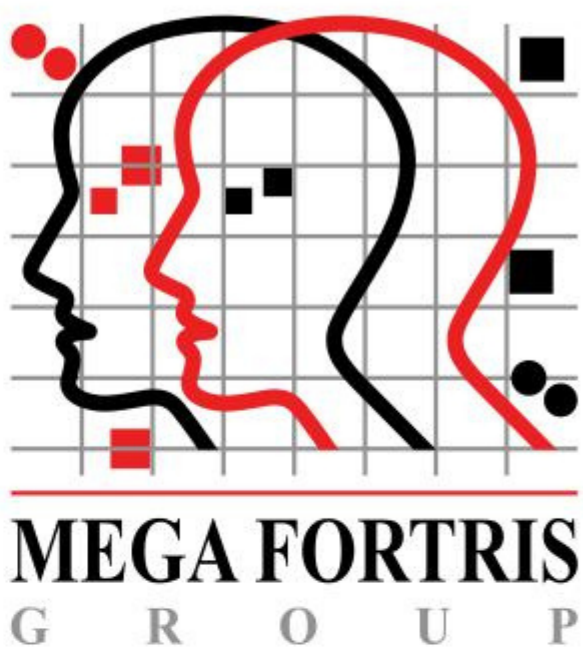
Applications:

- Pharmaceutical
- Petro-Chemical
- Retail Applications
- Postal Services
- Logistics
- Banking

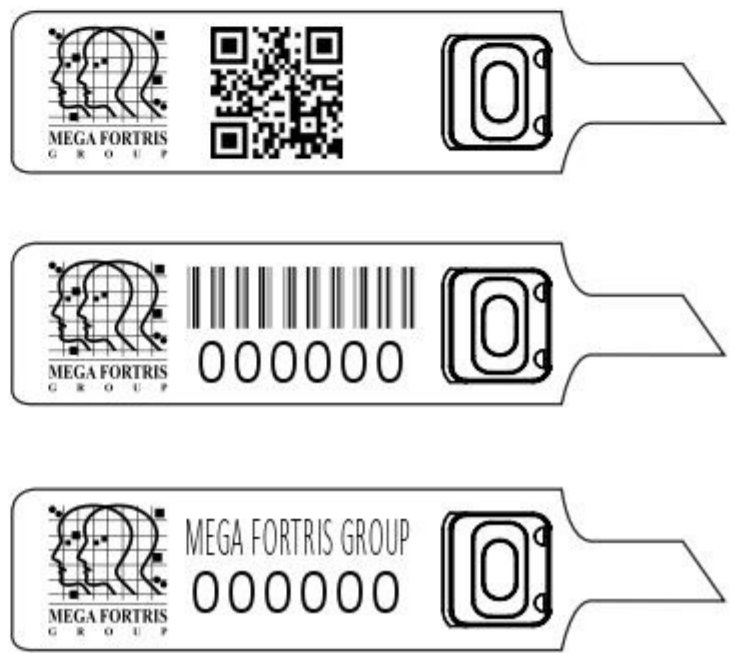


PREVENTION • PROTECTION • PEACE OF MIND

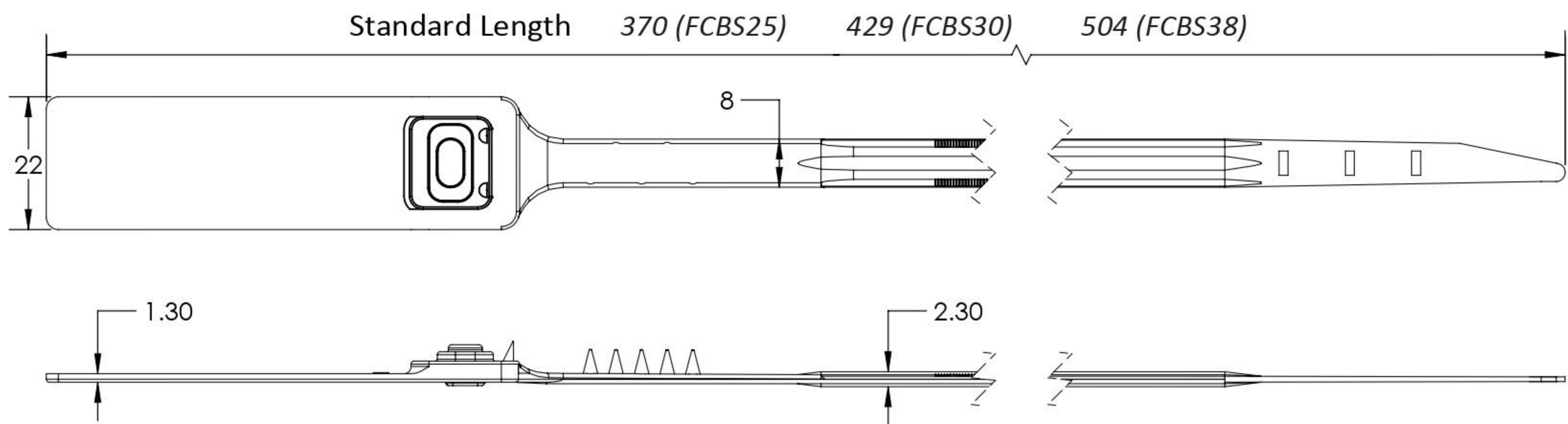




LASER MARKING OPTION



- 1 The Fort Cash Bag Seal is moulded with PP or high-impact NY material with encapsulated metal lock to complement the long thick strap.
- 2 One-way locking mechanism is embedded for fast and easy application.
- 3 The larger flap allows ample space for identifier marking. Irreversible identifiers such as name, logo, barcode, serial number and QR code are laser-marked on the flap.
- 4 Spikes are placed behind the seal to provide better gripping on the application surface.
- 5 Biodegradable additives for plastic material are available.
- 6 Different strap lengths are available to cater to different applications.



TECHNICAL SPECIFICATIONS

PRODUCT - FORT CASH BAG SEAL (FCBS)

Code	Material	Locking Length	Locking Size	Tensile Strength	Marking Area	Max Marking Digits
FCBS25	Plastic : Polypropylene (PP) <i>Operational Temperature Range:</i> -5°C to 80°C	247 mm (10 in)	8.0 mm (0.3 in)	PP: ≥15 kgf (≥33.1 lbf) NY: ≥18 kgf (≥39.7 lbf)	14 x 34 mm (0.6 x 1.3 in)	Serial no : 13 Barcode : 12
FCBS30	High-impact Nylon (NY) <i>Operational Temperature Range:</i> -25°C to 80°C	306 mm (12 in)				
FCBS38	Metal Jaw : Stainless Steel (SUS 304)	380 mm (15 in)				

PACKAGING

Carton	Quantity	Dimensions (mm)	Gross Weight (kg)	Volume (m³)	Standard Pastel / Solid Colours
FCBS25 Inner	1000	568 x 235 x 210 (22.4 x 9.3 x 8.3 in)	6.16 (13.58 lb)	0.028 (0.99 cu.ft.)	Polypropylene : Body : WH PSYL PSOR PSRD PSBL PSGN Cap : TRNS WH MILKY (BIO) Nylon : Body : WH B YL G RD Cap : TRNS WH MILKY (BIO)
FCBS30 Inner			6.5 (14.3 lb)		
FCBS38 Inner		615 x 280 x 280 (24.2 x 11.0 x 11.0 in)	7.4 (16.3 lb)	0.048 (1.7 cu.ft.)	

For colour customisations, kindly contact us for further information.

Updated Date : 20 January 2021